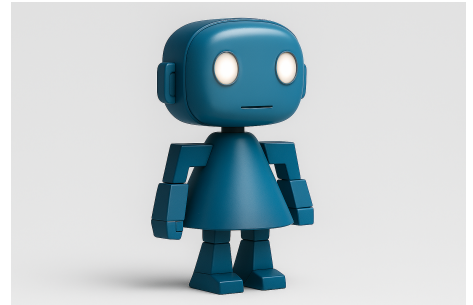


FB-02 is an intelligent robot designed for hospital environments and customer service scenarios. Its sober design and illuminated eyes convey professionalism and empathy, delivering reliable assistance to patients, visitors, and users. It provides wayfinding, monitoring, and real-time answers.



Technical Specifications

Model:	FB-02
Category:	Hospital Assistant / Customer Service
Personality:	Intelligent, empathetic, professional
Height:	48 cm
Material:	Lightweight alloy with antimicrobial coating
Colors:	Solid petrol blue
Power Source:	Rechargeable lithium battery
Estimated Runtime:	Up to 14 hours of continuous operation
Sensors:	HD camera, directional microphone, proximity sensors
Connectivity:	Wi-Fi 6, Bluetooth 5.2
User Interface:	LED face display with expressions; natural multilingual voice

Key Features:

- Wayfinding and companionship in hospitals and offices
- Visitor check-in and verification
- AI-powered answers to FAQs
- Environmental monitoring and alerts